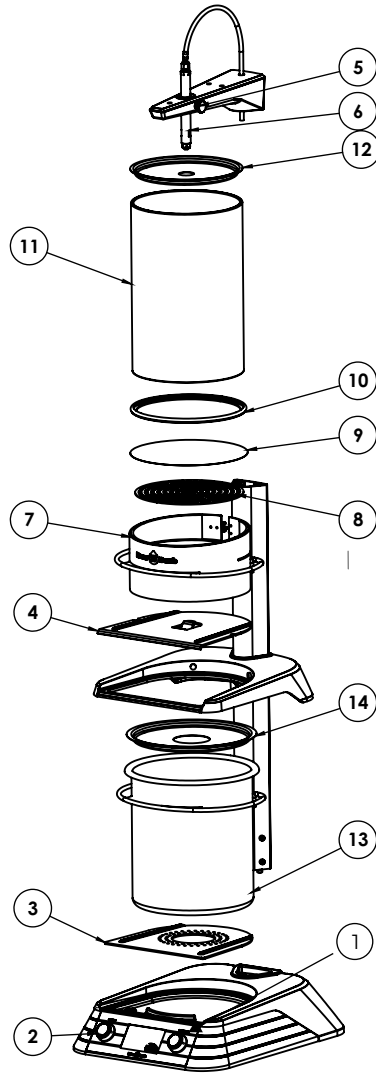


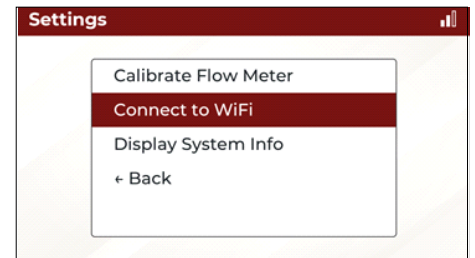
1 Assembly

Base Structure	
1	Flow Controller
2	Encoder
3	Base Wear Plate
4	Mid Wear Plate
5	Nozzle Adjustment Screw
6	Extraction Nozzle
Brew Cylinder Assembly	
7	Cylinder Base
8	Perforated Grate
9	Nylon Filter
10	Cylinder Seal
11	Glass Cylinder
12	Cylinder Lid
Catch Tank Assembly	
13	Catch Tank
14	Catch Tank Lid



3 Connect to Wifi

- Using the Encoder knob on the front panel, turn until Settings is highlighted, press in to select.

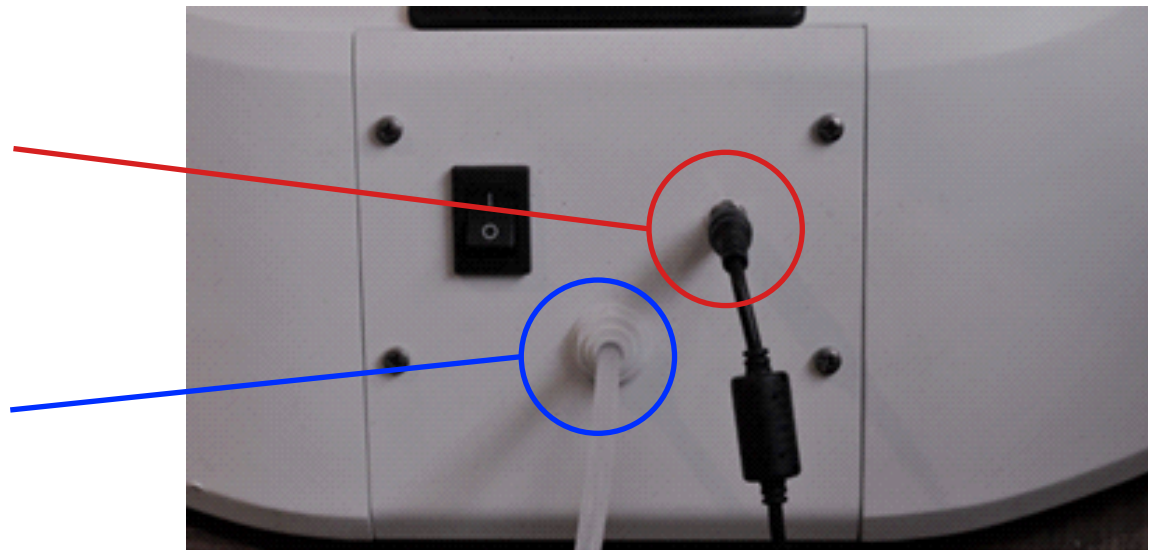


- Find and select Connect to Wifi
- Find and select your Wifi network
- Using the Encoder knob to scroll through and enter your password. Use SHIFT for UPPER and lower case letters. When Finished select Done and Continue

2 Power and Water Supply

Power Supply Input
Supplied

Water Supply Input
1/4 PE Water Line
Not Supplied



4 Web Portal



- **Log in to portal**
<https://portal.brewbomb.com>
- Username-your email address
- PW-your email **all lower case**
- **Change password**
- Organization-User-Edit
- **Setup Branch Locations**
- Organizations-Location-Insert New

- **Add Coffee Grinders**
 - Coffee-Coffee Grinder-Insert New
- **Setup Users**
 - Organization-User-Insert New
 - Complete email, name and role-insert to save.



- **Create user password**
 - Edit user-insert password
 - To create username and password the user must first be created and saved, then re-enter the user to edit, then create the username and password.

User	Role	Permissions
Company Administrator	All-Manages Account & Organization	Full Access
Brew Master	Create Brew Profiles, Run Reports, Brew Coffee	All things Coffee-Edit Organization-View
Barista	Brew Coffee	All things Coffee-View

5 Brew Profile

- Log in to portal
<https://portal.brewbomb.com>
- Coffee-Brew Profile
- Insert New
- In each section click the  for detailed written information or the  for video instructions for how to complete each Brew Profile section
- **Brew Profile Name**
 - Insert the name of your new profile
- **Basic Settings**
 - Create and/or select new origin
 - Coffee Weight- For first brew we suggest 3.5 lbs/1.6 kg of ground coffee

- Concentrate Yield-The Ace Brewer crafts concentrated cold brew which is diluted to a ready to drink product. Click the calculator and select a brew ratio. The yield field will be automatically populated. For more information about selecting a brew ratio see the help section.
- Pre Infuse- Prior to brewing, the coffee grounds must be pre infused with water in a specific ratio. See recommended values in the help section.
- **Advanced Settings**
 - Concentrate Total Dissolved Solids- Typical target concentration for brew yields are between 4.0 and 7.0 TDS.
 - Ready to Drink Total Dissolved Solids- Target concentration for the final RTD. Current industry standards are for TDS to be between 1.3 and 1.8.
 - Coffee Grinder Name-Select the grinder

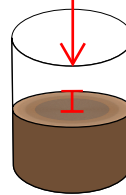
- Coffee Grinder Setting- Grind setting used to grind the coffee beans.
- **Brew Intervals**
 - The Ace Brewer uses both brewing and resting intervals. This provides the benefit of giving the coffee grounds water contact time separate from extraction time. The brew system tracks 3 different times.
 - Brew Time-Accumulated time for brew intervals
 - Rest Time-Accumulated time for resting intervals.
 - Total Time- The total time including brewing and resting intervals.
 - Total Brew Time must be within the min and max values illustrated on the Brew Time Bar.
 - Add brew and rest intervals using the Brew Profile Bar.
 - Additional info available. Click  or 

6 Brewing

- **Select Brew Profile**-Select the Brew Profile to brew by scrolling and press in to select.
- **Origin and Weight**- Retrieve and weigh the origin coffee beans as instructed.
- **Grinding**- Grind the roast coffee as instructed.
- **Pre infuse: Step 1**- Place the ground coffee in a vessel, place the vessel under the pre infusion nozzle and roll and select Dose. The system will automatically dose the correct amount of pre infusion water
- **Mix the water and coffee** grounds thoroughly.
- **Place the grounds** in the brewing cylinder assembly. (See assembly instruction in section 1)
- **Shape top** of ground bed into a bowl,



with the center **1" or 2.5cm Bowl Depression** in top of ground bed below the edges. Make sure the edges along the cylinder are level.



- **Place Cylinder in Brewing Position**- Follow on screen instructions to place the cylinder into the brewing position.

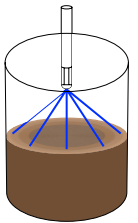
- **Start Brew-Adjust Flow Rate**



- Adjust flow rate to match target flow rate.
- **Turn Counter Clockwise to increase, Clockwise to decrease.**
- **Twist and Wait**- To adjust the flow rate adjust the dial and wait 5 seconds. Twist and wait.
- **Max Flow Rate Test**-The maximum flow rate is dependent upon the water pressure in your supply system. Open the dial 100% and note the max flow rate

achievable in your facility. Open the valve until the flow rate peaks. DO NOT TWIST THE VALVE PAST THE MAX OPEN STOP OTHERWISE THE VALVE WILL BE DAMAGED. Make note of this max flow rate for when you create new brew profiles.

- **Adjust Nozzle Height**. -Adjust the nozzle so the outside ring of the water spray is just inside the cylinder walls. If the nozzle is too high the spray will hit and run down the cylinder walls, decreasing yield. If the nozzle is too low, the spray will be concentrated in the middle of the grounds thus also decreasing yield.



- **Click Continue**-run the profile
- **Diluting to RTD**-Confirm actual TDS- Select field and change to actual-continue
- Place vessel below pre-infusion nozzle-system will dispense proper amount of water to dilute from concentrate to target RTD concentration.
- Congratulations- Your Brew is Complete